

# Primary Care News



**April 2022**

Welcome to your Primary Care newsletter published by the **Kent & Medway Primary Care Training Hub**.

---

## Quick Survey: You and the Training Hub Website

Participate to our [website survey](#) – it'll take only a minute and will help us support you better.

The survey will be open until the 29<sup>th</sup> April.

---

## Book your place on the New to Practice Programme 2022/23

The New to Practice Programme is a national initiative designed to support newly qualified GPs, Nurses and Nursing Associates and to help them to gain confidence and skills to successfully begin their career in general practice and thrive.

Find out more:

- [General Practitioners](#)
- [Practice Nurses](#)
- [Nursing Associates](#)

To book your place, please download and complete:

- [Enrolment Form](#)
- [Monitoring Form](#)

And return it to [kmpcth@nhs.net](mailto:kmpcth@nhs.net) making sure you copy your practice/line manager in your email.

---

## Apprenticeships in Primary Care

An Apprenticeship is on-the-job training that leads to national and international recognised qualifications ranging from Level 2 (GCSE-equivalent) to Level 7 (Masters-equivalent) and open to ages 16 and over.



Apprenticeships in Primary Care broaden the scope of training and developing for existing staff, whilst attracting new members of staff to improve diversity and bridging gaps in the workforce. They provide a future pipeline for clinical and non-clinical roles, simplify career progression, counteract an ageing workforce and provide a life blood to Primary Care workforce. Apprenticeship qualifications are available in a wide range of areas and levels in the Health and Social Care sectors including nursing, healthcare support, business administration, advanced clinical practitioner, team leading, HR, IT just to name a few.

Please refer to the [HASO website](#) for more Health and social care related apprenticeship standard HASO.

Contact us on [kmccg.pcthapprenticeships@nhs.net](mailto:kmccg.pcthapprenticeships@nhs.net)



---

### Focus on: Digital Support Technician – Level 3

Digital Support Technicians work in public or private organisations of all sizes and in all sectors. They use a range of digital office technologies for internal and external communications.

Find out more about the [Digital Support Technician Apprenticeship](#)

---

## Functional Skills

[Functional Skills English and Maths](#) are requested to start an apprenticeship or to progress in many position; they provide people of all education levels with accessible skills to improve reading, writing and communications, allow a better understanding of numbers and mathematical concepts, and are one of the most popular qualifications taken by adult learners.

## Interested in Apprenticeships?

Find out about creating your own [Digital Service Account \(DAS\)](#) to manage funding, job vacancies, find training providers etc.

---

## Guidance for APs who have completed their MSc outside of Primary Care

The HEE Multi-professional Framework of 2017 states that advanced practitioners have MSc level education and demonstration of core and area specific capabilities.

If you have completed your MSc outside of Primary Care there is [guidance](#) to support you

---

## ASC Digital Safeguarding Form

There is a new digital [Safeguarding Concern form](#) for Kent & Medway. With additional guidance on how to access, complete the form and when to make a referral.

For further support and information visit the [KCC website](#).

---



### FREE Non-Medical Prescribing Long Term Condition Prescribing Masterclass: Diabetes

Thurs 5th May— 7-9pm ONLINE

Speaker: Dr Becky Prince, General  
Practitioner

Facilitator: Ollie Phipps, NMP Course Director

Book a place by emailing [health.yourbooking@canterbury.ac.uk](mailto:health.yourbooking@canterbury.ac.uk) by 2/5/22 and include your role and organisation. A link will then be sent to you.

---

## Register now for online diabetes courses

**5 live courses** offering accredited diabetes training to healthcare professionals in Kent and Medway.

For help signposting onto the correct course, contact [admin@pitstopdiabetes.co.uk](mailto:admin@pitstopdiabetes.co.uk) or see the course programmes on [www.pitstopdiabetes.co.uk](http://www.pitstopdiabetes.co.uk)

[Read the flyer here](#)

---

## Last places available for K&M Primary Care Remote Consultation & Triage for Nurses And AHPs (2 Days)

It is mandatory to attend both days: Day 1 – 9<sup>th</sup> May. Day 2- 10<sup>th</sup> June.

More information or to register: [edafe.ogun@nhs.net](mailto:edafe.ogun@nhs.net)

---

## Free personalised care training

The [Personalised Care Institute](#) provides short online training courses to support health and care professionals get patients more involved in decisions about their care. Courses are suitable for all, including administrative and support staff, to make sure the voice of the patient is considered in everything we do. Find out more [here](#).



---

## Current Training and Development offers delivered by the Time for Care Team

There are a range of training and development offers to support those in practices and Primary Care Networks to develop skills and confidence with using quality improvement tools and techniques. All training is delivered by experienced faculty members of the Time for Care team, which comprises practice-based clinicians and non-clinicians and improvement experts who have worked extensively with general practice and wider primary care.

All webinars are approximately 90 minutes. Read [the flyer](#) for further details on courses and how to register.

---

## Kent & Medway Managing Deterioration – Promoting RESTORE2

RESTORE2 is a **physical deterioration and escalation tool for care/nursing homes** based on nationally recognised methodologies including early recognition (Soft Signs), the national early warning score (NEWS2) and structured communications (SBARD).

Find out more about [RESTORE2](#).

---

## Spirometry training days

The Training Hub are funding several Spirometry training days:

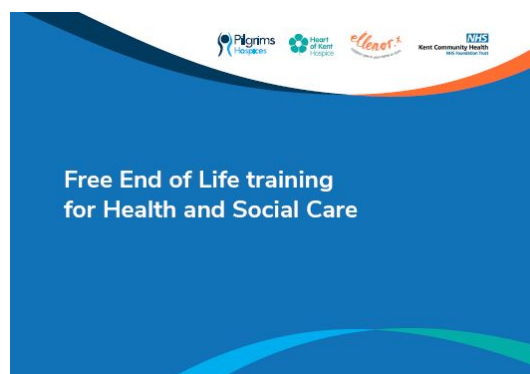
- **2-day Spirometry competency assessed training**
- **Spirometry interpretation updates**
- **2-day Spirometry competency assessed training for Healthcare Assistants**

Find out more [here](#).

---

## Free end of life training for Health & Social Care

The Kent and Medway Education Collaboration was inspired and launched in response to unprecedented numbers of COVID-19 related deaths, and their impact within health and social care at the start of the Pandemic.



[Find out more](#) about Kent and Medway collaborative funded education sessions.

---

## Leadership Support Circles

[Leadership Support Circles](#) are an award-winning series of short, evidence-based, themed online sessions based on 10 principles for leading compassionately. An additional four themes have now been added which ensure relevance to the current context.

---

## Trainee Nursing Associate (TNA) Thursdays

Health Education England are running a series of short [drop-in sessions](#) every Thursday for employers to ask questions about the Trainee Nursing Associate Apprenticeship and Nursing Associate role.

The [apprenticeship](#) is a new occupation introduced into the health and care workforce to bridge the gap between health and care assistants and registered nurses. Nursing Associate is a stand-alone role that will also provide a progression route into graduate level nursing.

---



## Foot Care Virtual Education for Primary Care

Watch 3 YouTube videos on Foot Care Virtual Education for Primary Care. They can be used as part of an in-house PLT or as a standalone update for clinicians, particularly any diabetes clinicians.

1. <https://www.youtube.com/watch?v=PEOrtqTQ8c4>
2. [https://www.youtube.com/watch?v=G-8f\\_66uyt4](https://www.youtube.com/watch?v=G-8f_66uyt4)
3. [https://www.youtube.com/watch?v=6OhkDMSa\\_ng](https://www.youtube.com/watch?v=6OhkDMSa_ng)

The training videos have been approved by both the Kent & Medway Diabetes Team and the east Kent clinical lead for diabetes, Dr Dharson Dharmason.

---

## Emergencies in Primary Care simulation training for internal and PCN PLTs

The Kent & Medway Training Hub is fully funding the KSS Primary Care Simulation faculty to deliver in situ simulation training to practice and PCNs. The sessions are appropriate to non-clinical and clinical primary care staff.



To organise your simulation training, please contact Jane Roome, HEE KSS GP Fellow in Simulation: [jane.roome@nhs.net](mailto:jane.roome@nhs.net)

[Learn more.](#)

---

## Refresher workshops to all Practice Assessors and Practice Supervisors



Find out more about [virtual session workshop](#) dates. Please email [slpl@canterbury.ac.uk](mailto:slpl@canterbury.ac.uk) to book a place.

---



## Success for the first Advanced Clinical Practice Conference

Thank you to all who attended the celebrating Advanced Clinical Practice conference on Friday 18 March.

From learning about the importance of research & decision-making, non-medical prescribing safety to mindfulness exercises and developing the Kent & Medway ACP forum. It was a great day of learning new knowledge, ideas and innovations.

More information and [resources](#).

[Congratulations](#) to those who were nominated and won awards.

---

## Leading Excellence in Advanced Practice (LEAP) Programme

In March Advanced Clinical Practice Leaders from across Kent & Medway come together as part of our LEAP Programme. Sharing knowledge, ideas and experience.



## MedStart

On Tuesday 29 March students from schools in East Kent attended a MEDStart4U taster day at William Harvey Hospital in Ashford.

MedStart4U offers a day long, interactive taster session on what it is like to work in medicine and combines simulated scenarios and practical sessions and Q and A sessions with junior to fully qualified doctors.

Students gain an insight into what it is like to be a doctor working in Primary and Secondary care, giving them the knowledge and skills to help decide their own career pathways.

For more information visit: <https://lnkd.in/efPtN6vD>

---

## Contact your local Training Hub:

East Kent Training Hub: [eastkent.traininghub@nhs.net](mailto:eastkent.traininghub@nhs.net)

North Kent Training Hub: [northkent.traininghub@nhs.net](mailto:northkent.traininghub@nhs.net)

West Kent Training Hub: [kmccg.wkenttraininghub@nhs.net](mailto:kmccg.wkenttraininghub@nhs.net)

---

The KMPCTH Newsletter is created by the Communications Team.

The deadline to submit news and updates is the **10th of each month.**

Subscribe to [Kent & Medway Primary Care News.](#)



---

This email was sent to [<<Email Address>>](#)

[why did I get this?](#) [unsubscribe from this list](#) [update subscription preferences](#)

Kent & Medway Primary Care Training Hubs · Kent House · 81 Station Road · Ashford, Kent TN23 1PP · United Kingdom